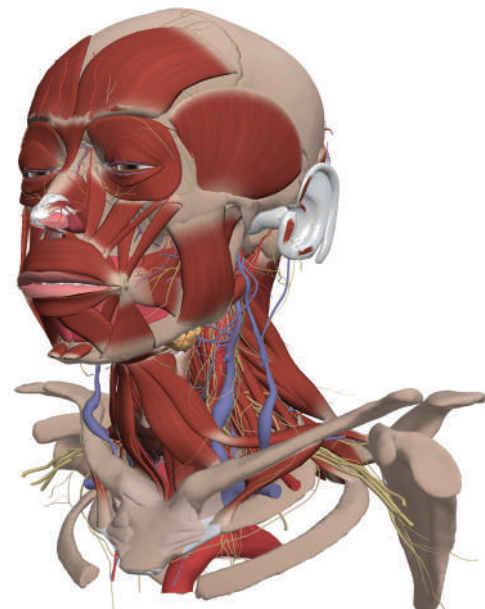


Primal's 3D Real-time Human Anatomy

Combining Primal Pictures' medically accurate 3D human anatomy models with intuitive interactivity, Primal's 3D Real-time Human Anatomy provides an unsurpassed 3D human anatomy atlas and image creation tool, ideal for education, training and practice. This flexible 3D anatomy atlas will transform teaching and learning human anatomy with advanced image manipulation tools that allow users to interact with 3D anatomical structures as if holding them in their own hands! Primal Interactive Human will provide a time saving reference and source of high quality images in a wide range of teaching and practice environments.

- Provides seamless electronic access to accurate 3D anatomy and clinical content.
- All content can be easily embedded into lectures, lesson plans, handouts and Learning Management Systems.
- Licenses are based on concurrency and can therefore allow large groups to access the content for a relatively small per user fee.
- Our flexible student adoption models provide access to the students - and faculty - for an agreed time period and cost less than many textbooks.
- Regular content and functionality updates are included in the price for all annual licenses and subscriptions.



Anatomy is clearly revealed in visually engaging and accurate 3D - more memorable and effective than 2D!

Detailed and medically accurate interactive 3D anatomy atlas will help students learn and understand anatomy and relationships between structures more effectively and increase their engagement, understanding and recall.

Creating your own, customized 3D views is easy! Use the functions to add or remove the relevant structures, rotate to the right angle, add pins, structure labels, your own text, annotations, lines or arrows - then export your own bespoke images.

Increase workflow, enliven lectures and lab sessions using content directly. Or quickly embed seamless links using CreateWeblink function.



Primal's 3D Real-time Human Anatomy

Fully interact with 3D models containing over 4000 structures.

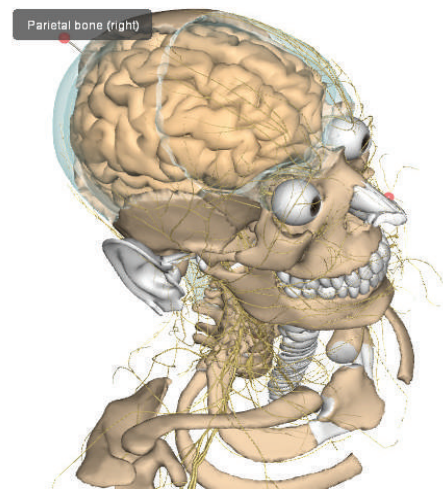
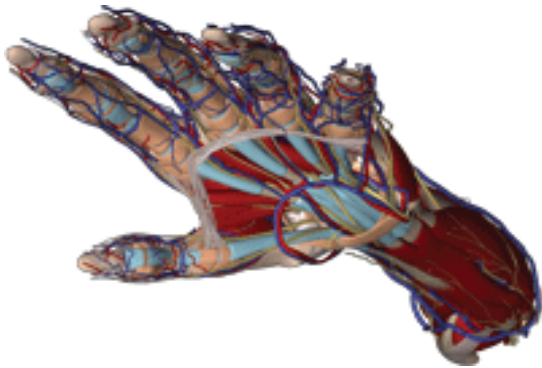
Rotate the 3D models in any direction using your mouse, zoom in or out and use intuitive functions to choose to add or remove groups of structures - bones, arteries, veins, nerves, muscles, fascia - or view any structure in isolation.

Use helpful preset bookmarks to explore each region from superficial to deep

Identify any visible structure with pop up labeling or you can add your own fixed label or annotation.

Easily create accurate customized images, complete with labels and annotations - then easily print or save them for presentations and hand outs.

Use additional settings to create outline-only views - great for coloring exercises - or 3D stereograph views for a truly 3D experience!



Based on Primal's benchmark, medically accurate 3D anatomy models, Primal Interactive Human represents the future of anatomy teaching and learning.

- Whole body
- Head
- Spine
- Shoulder
- Hand
- Thorax
- Abdomen
- Pelvis - Female
- Pelvis - Male
- Hip
- Knee
- Foot

Get in touch

Telephone

800-901-5494

Website

www.tetondata.com

"It is a great teaching tool. I also like the ability to use customized images in my powerpoint presentations and in my class room handouts."

Esteban Ruvalcaba
Independent masseur
Massage Therapies of Columbia



"I recommend this product to all teachers of anatomy as an important tool to illustrate your work, and for students as a learning tool to show you the human body in a way that they would not have seen before."

Dr Stephen Sandler PhD DO
Senior Lecturer
The British School of Osteopathy London